

Clay ELECTRIC News

A Touchstone Energy® Cooperative

7784 Old Hwy. 50 ■ P.O. Box 517 ■ Flora, Illinois 62839 ■ www.ceci.coop ■ 618-662-2171 ■ 800-582-9012



Photo courtesy of Honda

From the Manager

As we start to move from winter storms to spring storms, it's important for our members to keep safety in mind. During storm outages, many of our members use generators. Generators are useful tools but should always be used safely.

A generator should never be used inside the home or in wet conditions. The greatest dangers generators pose to people are electrocution and carbon monoxide poisoning. A generator should be set up on a dry, even surface under an open canopy-like structure, and you should never touch one with wet hands. If a generator needs to be refueled, it is safest to give it time to cool down to avoid the risk of hot engine parts igniting spilled fuel. Fuel should always be stored in approved containers and away from sources of open flame.

Properly installed whole-home generators can power your home safely in an outage, but you should never attempt to power your house with a portable generator by plugging it into a wall outlet. **10459-002** This causes "backfeeding" and can be extremely dangerous to you, your neighbors and the linemen trying to restore power. The same transformer that steps down the voltage from the distribution lines to what is safe for your home will step up the voltage of backfed power to dangerous levels for linemen expecting the line to be dead.

It bears repeating that generators, or any other gasoline, diesel, propane, natural gas or charcoal-burning devices, should not be used indoors. Carbon monoxide is odorless and opening doors and using fans will not prevent a potentially lethal buildup. Installing CO

alarms or combination CO/fire alarms in each room of your home is an easy way to help protect yourself and your family. Carbon monoxide can quickly incapacitate you, so if you should ever feel sick, dizzy or weak while operating a generator, get to fresh air right away.

Don't forget to be on the lookout for your member number in the center section of this magazine. There are three member numbers hidden in Clay Electric News. If you find your number and give us a call you win \$5 off your next bill!



Matt Conklin
CEO

Check your breakers

When you experience an outage, the first thing you should do is check your breakers. For some members, this only means checking the breaker panel located inside your house or garage. If your location is the only one without power, there is a chance your breaker tripped.

For others, there is an additional step. Take a look at the meter(s) at

your location. Your meter may be located on your house, garage, out-building, a pole or another structure. Remember, you may have more than one meter. The main part of your meter will be locked with a seal.

Do not tamper with this seal or try to open this portion of your meter box. If there is no box beneath the sealed portion (see Photo 1), look no

further. **14983-001** However, if you see a separate box attached beneath your meter (see Photo 2), lift this box and check this breaker as well (see Photo 3).

If you have checked all your breakers and are still without power, contact Clay Electric Cooperative to report your outage.



Photo 1

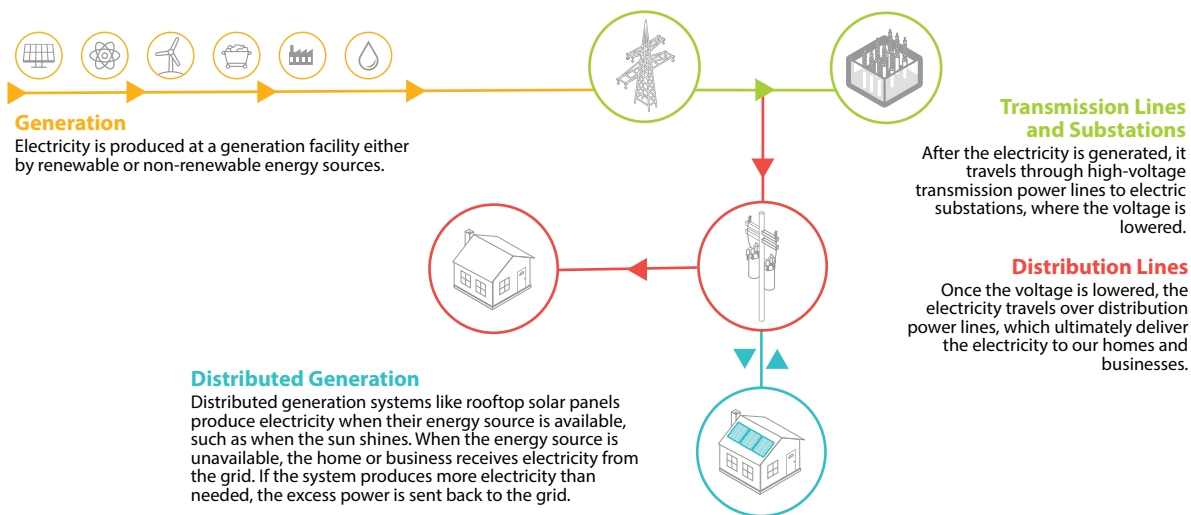


Photo 2



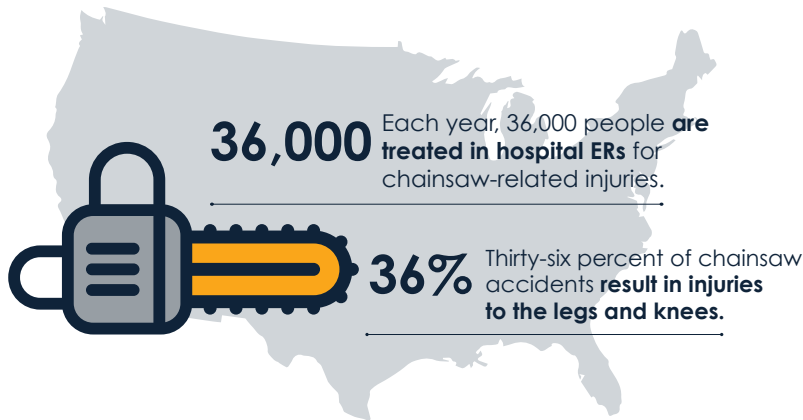
Photo 3

HOW ELECTRICITY REACHES YOU



Chainsaw Safety

- STATISTICS -



The average chainsaw injury requires 110 stitches.



The two most common places for injuries are the front left thigh and the back of the left hand.



One in five chainsaw injuries is from kickback.



Kickback is the single greatest cause of injury to chainsaw users.



Medical costs for chainsaw injuries amount to around 350 million dollars per year.



Kickback, binding, and pull-in cause the most injuries from chainsaws.

Source: Centers for Disease Control and Prevention

- INJURIES -

Source: U.S. Product Safety Commission



Head Injuries
3,418



Upper Body Area
2,141



Arm and Hand Area
17,994



Leg Area
16,348



Foot Area
2,885

Safe Electricity.org®

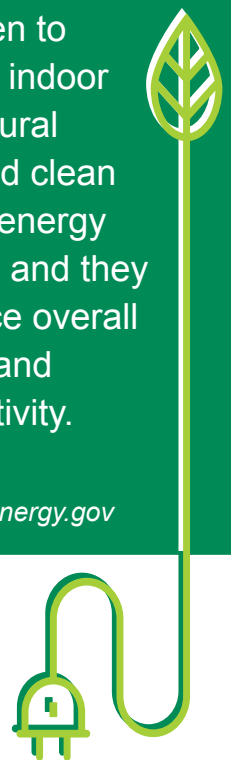
Energy Efficiency

Tip of the Month

Washing windows and screens is a great way to practice energy efficiency during spring cleaning. Clean windows and screens make your home brighter by allowing more sunlight in, reducing the need for lamps and fixtures.

Clean screens also allow more fresh air in the home when the windows are open to recycle indoor air. Natural light and clean air are energy savers, and they enhance overall health and productivity.

Source: energy.gov



Minutes of the Board of Trustees Meeting

Jan. 23, 2023

The regular meeting of the Board of Trustees of Clay Electric Co-operative, Inc. (CECI) was held at the Clay Electric Co-operative Headquarters, Flora, Ill., beginning at 4:53 p.m. on Monday, Jan. 23, 2023.

Trustees present were Bob Pierson, Neil Gould, Bill Croy, Kevin Logan, Richard Rudolphi, Frank Herman, Frank Czyzewski, Evan Smith and Josh Schnepfer. Also present were Matt Conklin, CEO, and Attorney for the Board Tyra Cycholl. The meeting was opened by Bob Pierson, who presided, and Neil Gould acted as secretary thereof.

The invocation was given by Evan Smith and was followed by the Pledge of Allegiance.

The following proceedings were had [all action being first duly moved and seconded, and all action taken being upon the unanimous vote of the Board or without dissenting vote of abstention unless otherwise stated]:

APPROVED, the Suggested Agenda.

APPROVED, the Consent Agenda including the following:

- **APPROVED**, the prior meeting minutes;
- **APPROVED**, (a) to admit to membership those applicants connected for service since the last such review by the board, and (b) cancel those former members shown on the Manager's Report since the last such review by the Board, said members no longer taking service;

REVIEWED, the Consent Agenda including the following:

- **REVIEWED**, the Work Orders;
- **REVIEWED**, the Disbursements;
- **REVIEWED**, the Credit Card Statements;
- **REVIEWED**, the Attorney Retainer;
- **REVIEWED**, the Account Summary Report;
- **REVIEWED**, the Federated Report from the Board;

■ **REVIEWED**, the CRC Report from the Board.

APPROVED, the farming contract for a one-acre plot of land north of Flora.

OPENED, six bids for Truck 12.

APPROVED, the accepting the high bid for Truck 12.

APPROVED, increasing the IRS mileage change to \$0.655/mile.

REVIEWED, NRECA news.

HEARD, a report by Bob Pierson regarding SIPC Board Meeting.

HEARD, a report by Kevin Logan regarding AIEC Board Meeting.

WERE UPDATED, on the NRECA Annual Meeting.

REVIEWED, the AIEC/CFC Financial Workshop on Feb. 21-22.

At 5:55 **APPROVED**, entering into executive session.

At 6:16 **APPROVED**, exiting executive session and returning to the regular meeting.

HEARD and **APPROVED**, a financial report by Matt Conklin as to the following:

- Monthly Reconciliation;
- SIPC Power Delivered in December 2022;
- December 2022 Cash Flow;
- Line Loss;
- December 2022 Form 7;
- December 2022 Balance Sheet;

REVIEWED the Quarterly Safety Committee Meeting.

REVIEWED, the Safety Report for the month of January.

REVIEWED, the Monday morning Safety meeting.

HEARD and **APPROVED**, the Manager's report by Matt Conklin on the following topics.

- CRC Capital Credit;
- Retirement of Office Staff;
- Operations Report;
- Communications Report;
- Upcoming meetings.

WERE INFORMED, of the CRC Capital Credit payment.

DISCUSSED, the retirement of Office Staff in 2024.

REVIEWED, the Operations Report. **14036-001**

REVIEWED, the Communications Report.


WERE REMINDED, of upcoming meetings on Feb. 27, 2023, and March 27, 2023, at 5 p.m., and April 24, 2023 and May 22, 2023 at 7 p.m. and the strategic planning on Jan. 31 and Feb. 1, 2023.

There being no further business to come before the Board, said meeting was declared adjourned at 6:47 p.m.



Every month we will have three member numbers hidden throughout Clay Electric News. If you find your member number that corresponds to the one found on the upper right corner of your bill, call our office and identify your number and the page it's on. If correct, you will win a \$5 credit on your next electric bill.

Clay Electric Co-operative, Inc.

A Touchstone Energy® Cooperative 

7784 Old Hwy. 50,
P.O. Box 517,
Flora, Illinois 62839
618-662-2171
800-582-9012

Office hours:
7:30 a.m. — 4:00 p.m.
www.ceci.coop
facebook.com/ceci.coop

